

tina kotsoni

Rocks

Handmade Jewelry





Tina Kotsoni was born in 1975 in Piraeus. Having finished the high school of merchants in 1997 she started to deal with jewels. She started to study in private school, then worked in a jewelry workshop gaining valuable experience.

She ventured out alone in the Greek jewelry business in 2004.

In 2006, she met with Efthimi Stergioula and together they moved to Aegina. There, first of all, they set up her workshop, their home and then a gallery that presents her work as well as pieces by other talented colleagues.

She works her jewelry on silver, gold, or brass, often combining, metal with semi-precious stones and freshwater pearls.

Her jewels are unique and identifiable as each bears the mark of her own personality. Inspired and motivated by her love for what she does, either “sewing” the jewel with metal, or “printing” on it, constantly searching for new ways to perfect her work

Κοσμήματα κατασκευασμένα από ορείχαλκο και ασήμι.

Τα δαχτυλίδια είναι ρυθμιζόμενα.

Όλα τα σχέδια είναι διαθέσιμα σε όλα τα χρώματα.

Στα σκουλαρίκια τα εξαρτήματα είναι ασημένια και υπάρχουν οι παρακάτω επιλογές.

Jewelry made of bronze and silver.

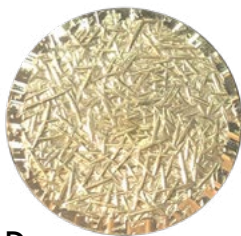
The rings are all adjustable with silver parts.

All designs are available in all colors.

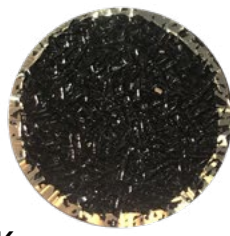
The components of the earrings are made of silver and the following options are available.



Όλα τα σχέδια είναι διαθέσιμα στους παρακάτω χρωματισμούς μετάλλων
All designs are available in the following metal colors



GOLD



BLACK



NATURAL



Όλα τα σχέδια είναι διαθέσιμα στα παρακάτω χρώματα κρυστάλλων
All designs are available in the following crystal colors

Νέα μεταλλικά χρώματα | *New metallic colors*



EMERALD



RUBY



SAPPHIRE



ANTIQUÉ COPPER



DARK VIOLET



NEW LILAQUE



CHOCOLATE



PYRITE



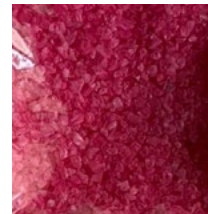
BLACK



AMBERS



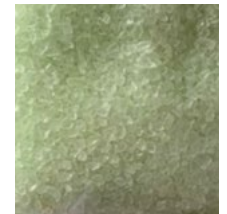
COFFEE



STRAWBERRY



AQUAMARINE



GREEN PASTEL



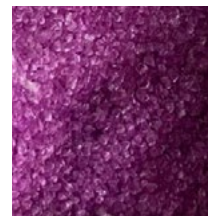
PINK



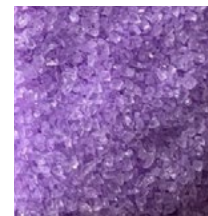
DIAMOND



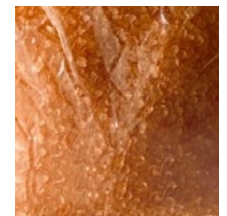
PLUM



VIOLET



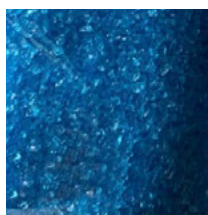
LILAC



ORANGE



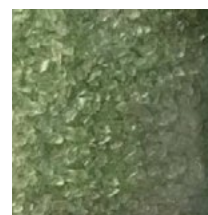
YELLOW



BLUE



AQUA



OLIVE GREEN



LIGHT GREEN

Ruffles

The everyday chic

Party pieces

Triangle

The peacock designs

Fashion bee

Street style

Pretty chic

Look at this

Drops

B = Bracelet

D = Ring

S = Earrings

K = Pendant

D1052



S1052 • 6cm



S1052 Geode • 7cm



Ruffles

S1052Y Geode



SRuffles • 2,5cm



DRuffles



SRuffles



DRufflesV Geode





DRuffles Geode



KRuffles Geode • 2,5cm



SRuffles Geode • 2,5cm

*An ode
to the movement*



DRuffles VD Geode

B1050

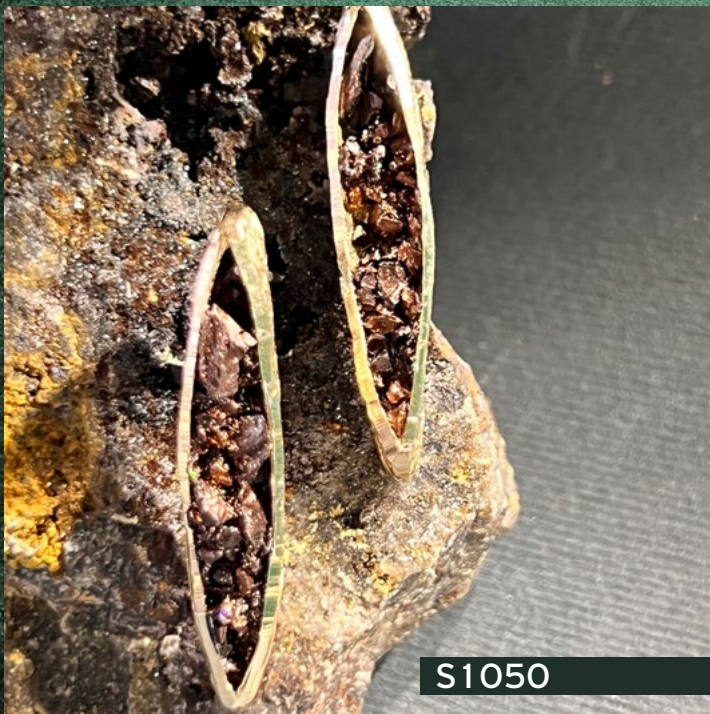


D1050



S1050 • 3,5cm

*The
everyday
chic*





S13 Geode



S13 Geode



K13 Geode

*Wear your story
everyday*

S1027 Simple • 5,5cm



B17 Geode



D17 Geode



K17 Geode



S17 Geode • 4cm





S17 Long Geode • 7,5cm



*Chic jewelry
to wear for run
around*

B1056



D1056



S1056



*Party
pieces*



K1056 • 8,5cm

K1056m • 7cm



S1056 Double • 7cm



S1056Y • 2,5cm



*For a
party-ready
aesthetic
that will sway
as you move*



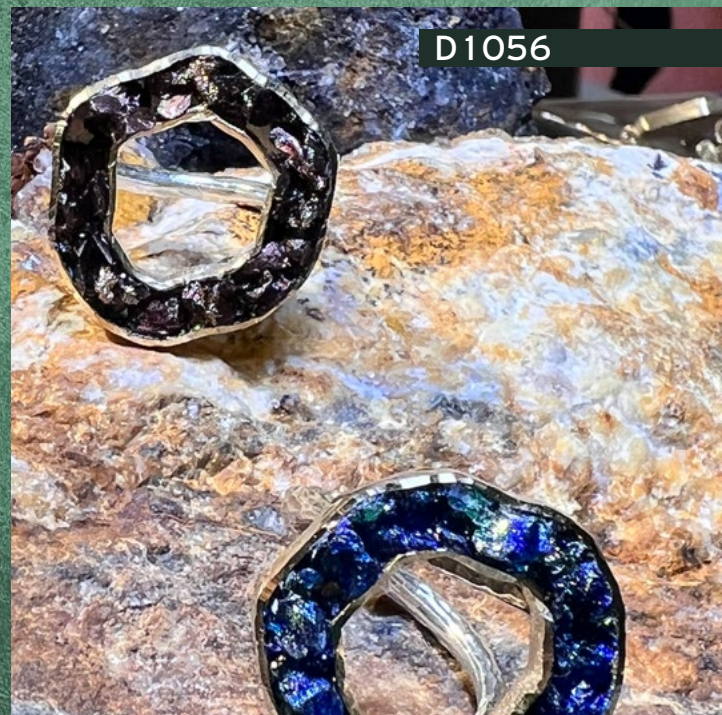
K1056 Large • 9cm



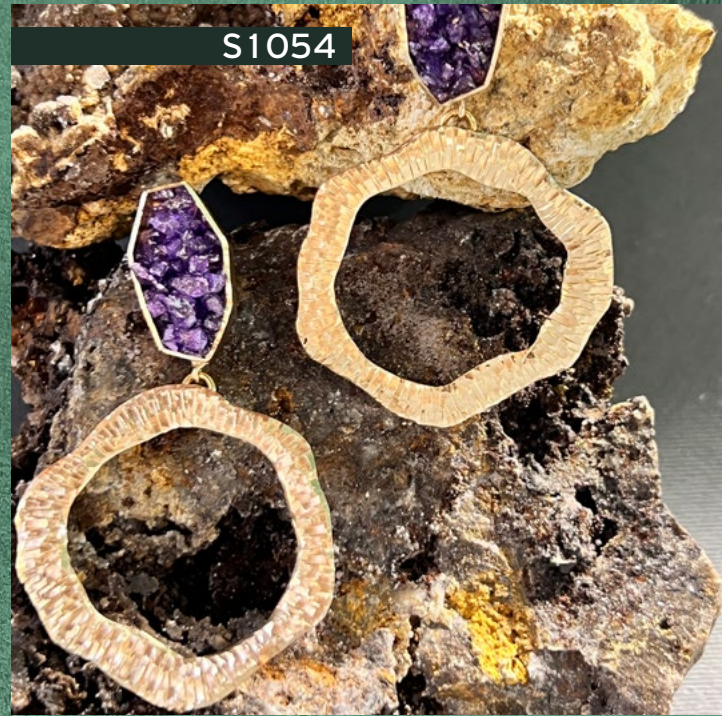
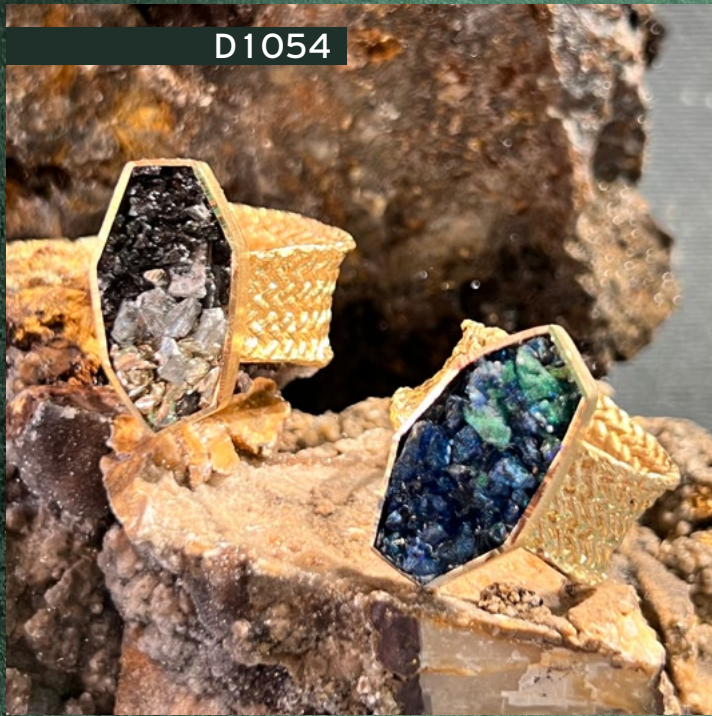
S1056 • 7cm



S1056 Large • 7,5cm



D1056



*Simply
sophisticated*

D1054





BTr1



STr1



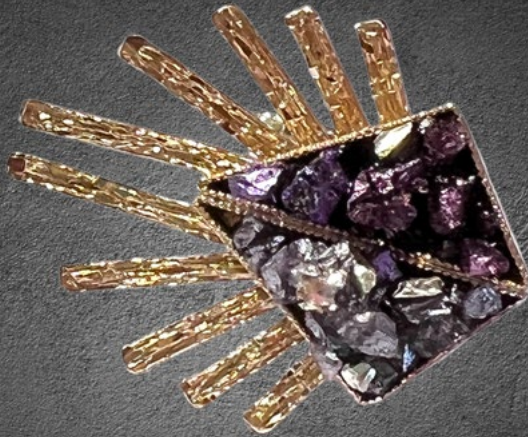
STr1 • 5,5cm

Triangle

STr3



DTr2 Double



STr2 Double • 4cm



STr2 • 4cm

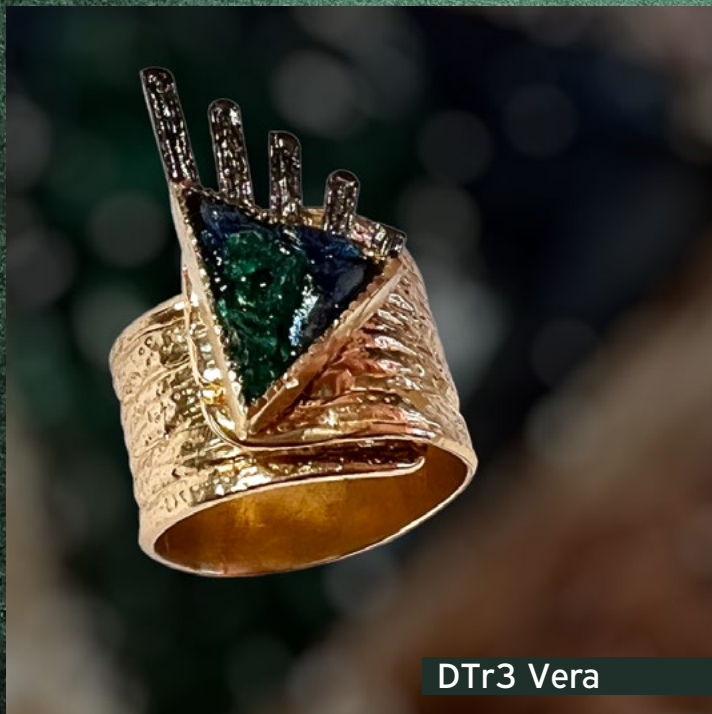
*3 sides
body, mind
and soul*



DTr3



STr3



DTr3 Vera



STr3 • 2,5cm



D1058



K1058



S1058

*The peacock
designs*

S1058



D1058



S1058 • 2,5cm



K1058 • 2,5cm



*Stylish & desirable
because of its
exotic and inspiring
colours*



S1058

B23 Geode



D23 Geode



S23 Geode • 8,5cm

Fashion bee



S23 Geode • 8,5cm



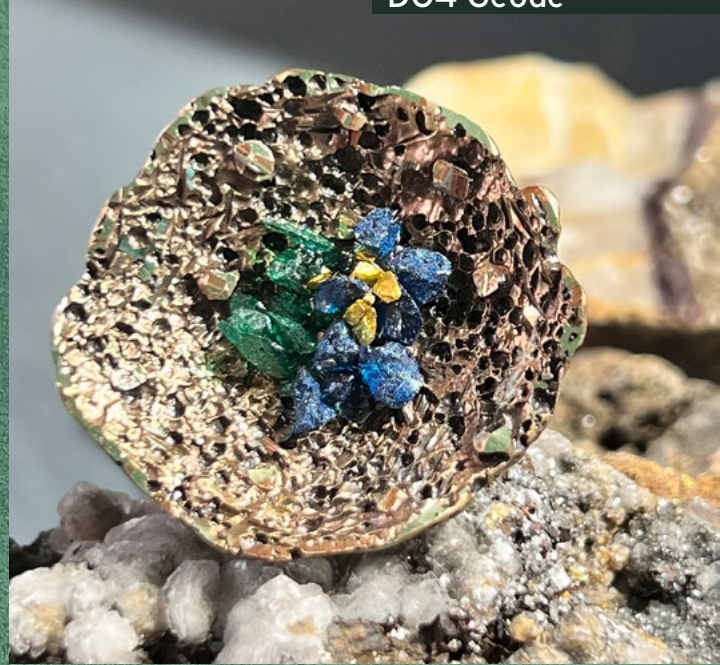
B45M Geode



K45Y



DO4 Geode



K45 Geode



KO4 Geode



S04 Geode



D1053VB



S1053 • 7cm



D1053VA



B1049



S1049 • 5,5cm



D1051VT



Street style



D1051



D1051



S1051 • 6,5cm



S1051





*The key
to looking stylish
is to wear
street-style jewelry*



Pretty chic

B1047



B1047



D1047 Vera



K1047 • 6,5cm





B1001 Geode



D1001 Geode



D1031A

*Cool and
Classic*

D96V



D96V Geode



S96 Geode • 7cm



K96 Geode



Look at this

S1057 • 8cm





Drops

BDrops



tina kotsoni
Handmade Jewelry

☎ 22970 24324 📱 6944 374781

✉ tina_kotsoni@hotmail.gr

